

# Picture PERFECT

A HOME THAT  
PROVIDES THE  
IDEAL SPACE FOR  
REST, PEACE AND  
TRANQUILLITY

## F-ARCHITECTURE 083 286 8652

The property's location – inside a private game reserve with roaming wild animals – played a big part in how **F-Architecture** designed this residence. The success of this project is attributed to the hands-on project team that included the architect, builder, engineer, labourers, brick layers and, of course, the owner. Natural materials, such as wood and stone cladding, and industrial materials, including steel beams, columns and IBR side cladding, were incorporated into the property to create a home that is in harmony with its surroundings.

## DREAM LIVING CONSTRUCTION 083 452 2070

**Dream Living Construction** undertook the construction of the swimming pool, the outside boma area and the tile work for this property. Specialised bullnose tiling was used with green tiling inside the pool and charcoal around it to give it a statement look. **Dream Living Construction** specialises in crafting bespoke swimming pools, mesmerising water features, serene Koi ponds and captivating bomas.

## LIFESTYLE LAB CONSTRUCTION AND DESIGN 078 204 2617

**Lifestyle Lab Construction and Design** specialises in construction, interior design and architectural finishes specifications. The company built the structure and supplied an array of finishes and fixtures with great complexity between smooth and textural. This included the natural finishes like stone, wood, concrete and steel. Working closely with the architect ensured a high-end residence with well-appointed finishes.

BY TRISHA HARINATH • PROJECT CONSULTANT IONA O'REILLY  
PROPERTY COORDINATOR NOSIPHO KWEYAMA • PHOTOGRAPHER NIC BALETA

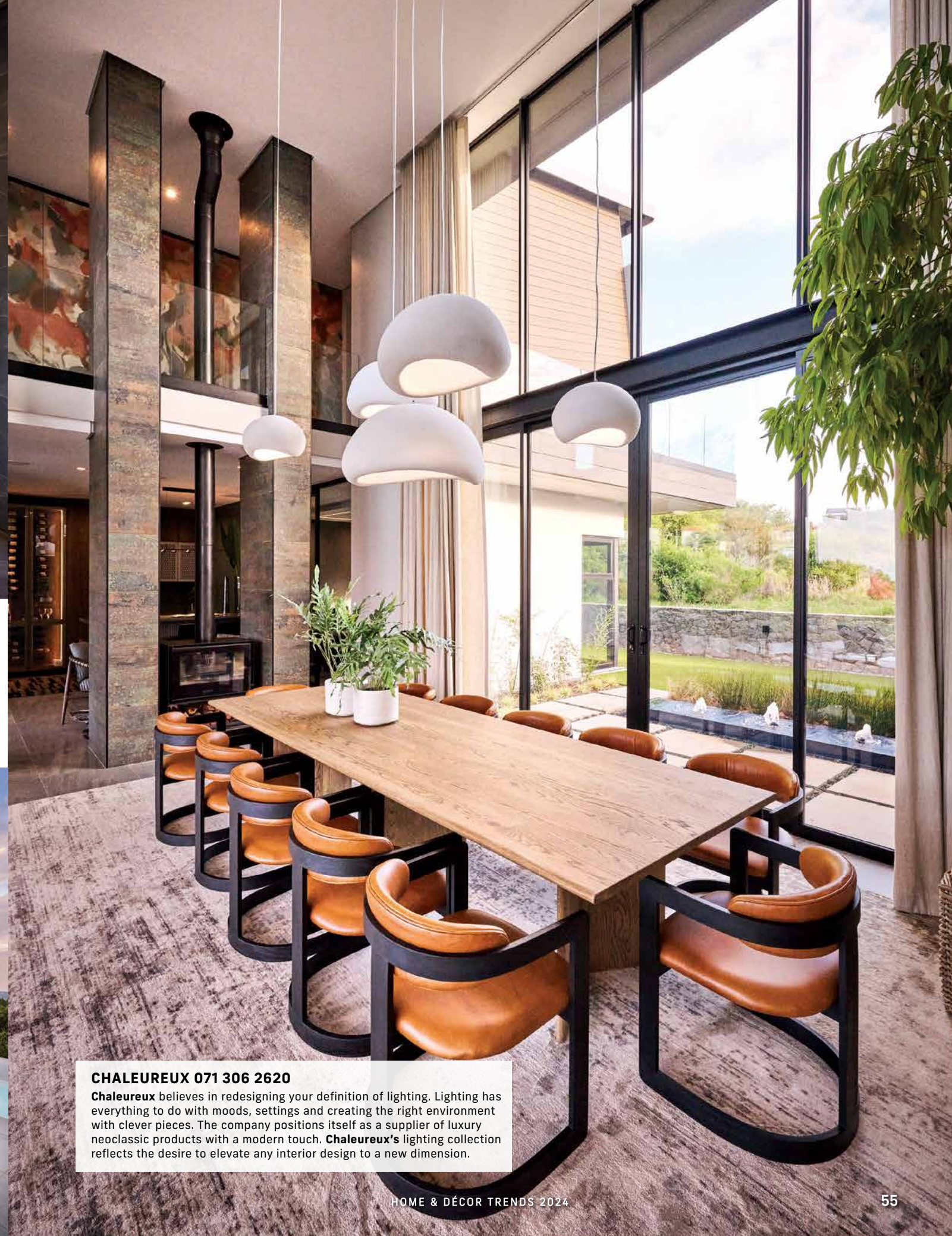




CURTAIN DROPS 083 601 4723

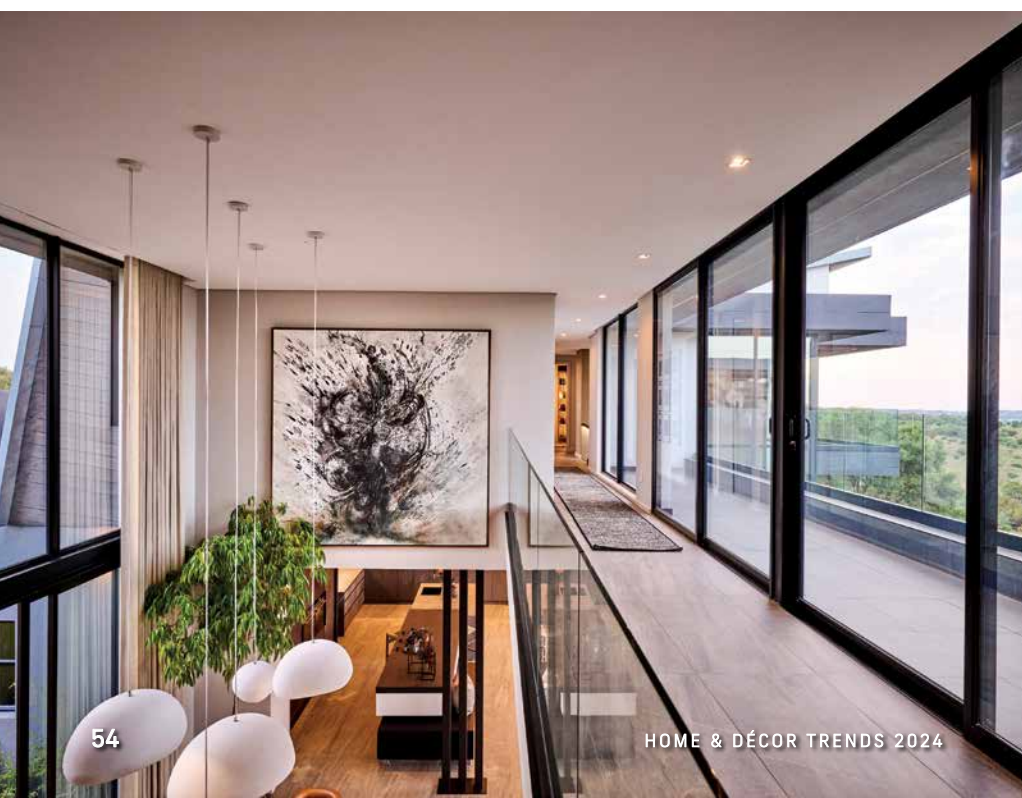
**ABOVE:** Window dressings add a beautiful finish to a home, and these owners required a seamless and clean look using both curtains and Blind Designs' blackout roller blinds, supplied by **Curtain Drops**. Neutral colours were selected for their versatility and timeless appeal.

**S**ituated on a quiet nature reserve, this marvel of a home offers awe-inspiring architecture and interiors that are in vogue. "Its uniqueness, double-volume spaces and open-glass northern view", the owner explains, is what makes this property trendy. >



**CHALEUREUX 071 306 2620**

**Chaleureux** believes in redesigning your definition of lighting. Lighting has everything to do with moods, settings and creating the right environment with clever pieces. The company positions itself as a supplier of luxury neoclassic products with a modern touch. **Chaleureux's** lighting collection reflects the desire to elevate any interior design to a new dimension.







HUS LIVING SPACE 072 575 4722



HUS LIVING SPACE 072 575 4722

**ABOVE:** Briefed by the architect, **HUS living space** was responsible for designing, manufacturing and installing all the cabinetry in this home, including the games room and the TV unit. Trendy and premium-quality materials were used, such as white oak veneer monocoat, glass doors with bronze frames and LED lights to showcase the wine display in style, and tailor-made light grey CNC Duco doors, which complement the wall units. In this space, silky concrete worktops were used, resulting in a sleek finish.

**LEFT:** The main walk-in dressing closet was designed, manufactured and installed by **HUS living space**. The cabinetry shows off a light grey gloss finish with bronze frame and sliding doors with LED lighting. The island with slatted detail in a Kubanite matt finish includes a worktop from Infinity Surfaces' Calacatta Oro range.

When it comes to the residence's architecture, plenty stands out, including the double-volume features, the steel bridge connecting the main bedroom lounge with the main bedroom, and the double-glazing glass, which offers these residents picture-perfect views of the northern part of the reserve. >

"It is a contemporary and modern property, and our interior decorator was able to transform our ideas into a beautiful, elegant and inviting home." – the home owner

## BENTLEY SOUTH AFRICA 010 020 4000

The Bentayga Azure embodies **Bentley's** commitment to wellness, offering an oasis of calm and serenity for those navigating the demands of a busy life. Beyond its thrilling performance, this model prioritises occupant wellbeing, emphasising secondary ride comfort for a truly relaxing journey. The Front Seat Comfort Specification, providing up to 22-way adjustability and heating/ventilation functions, ensures an optimal temperature for comfort and alertness. Meticulous interior details include 'wellness quilting', open-pore veneers and a variety of customisable options. Externally, the vehicle exudes elegance with bright chrome accents, Azure badging and 22-inch ten-spoke wheels. Timeless luxury meets wellbeing in the Bentayga Azure.







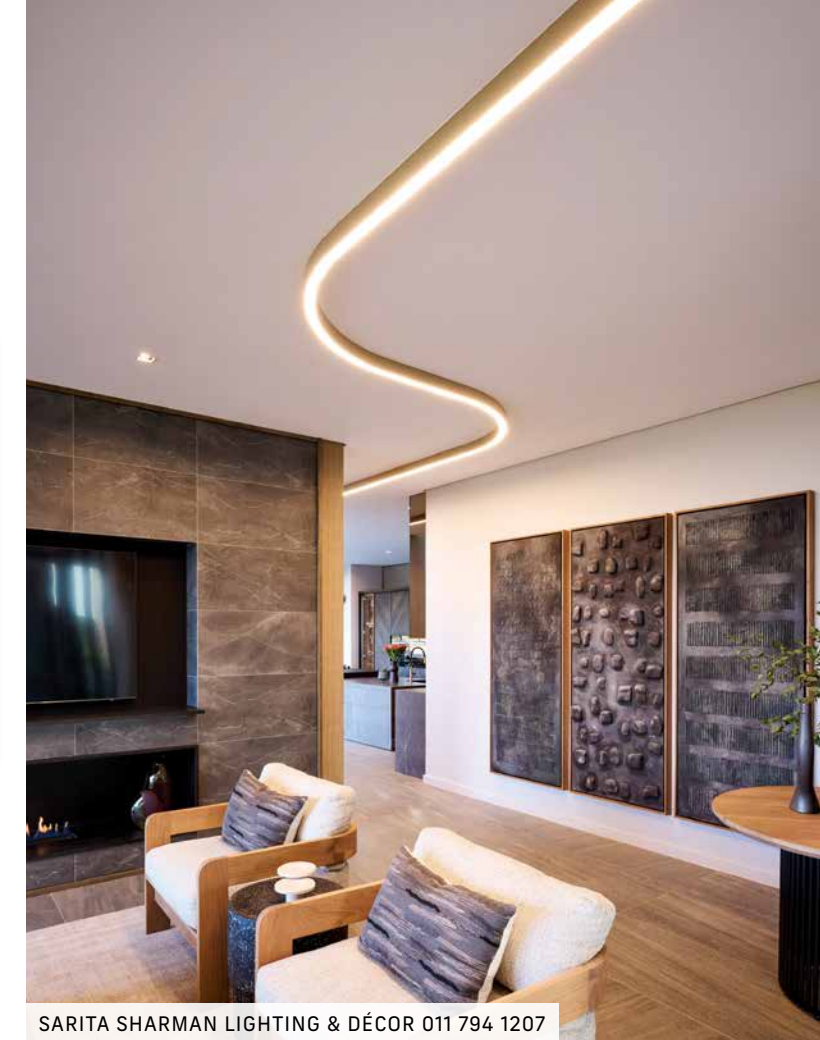
HUS LIVING SPACE 072 575 4722

"In each room, there is something that catches the eye and is on point with the current trends."

**RIGHT: Sarita Sharman Lighting & Décor** specialises in lighting design and supply. For this property, the company worked with the designer who supplied the brief. **Sarita Sharman Lighting & Décor** was responsible for all the LED lighting in the home, both interior and exterior. Among the other lighting fixtures, the company supplied a custom-made LED Linear Luminaire for the entrance hall, which leads you straight into the home.

**BELOW:** Transform your home with **Bosun's** Urban Paving range that delivers a smooth, seamless look to your driveway. Available in four sizes, the pavers can be installed in combination to create a unique pattern. With 25 years of expertise and innovation, **Bosun** proudly provides modern, uniquely styled concrete paving to enhance your home's aesthetic. Elevate your surroundings with **Bosun's** commitment to quality.

"The architecture is indeed a feat and on par with the exceptional interior design and styling of the home."



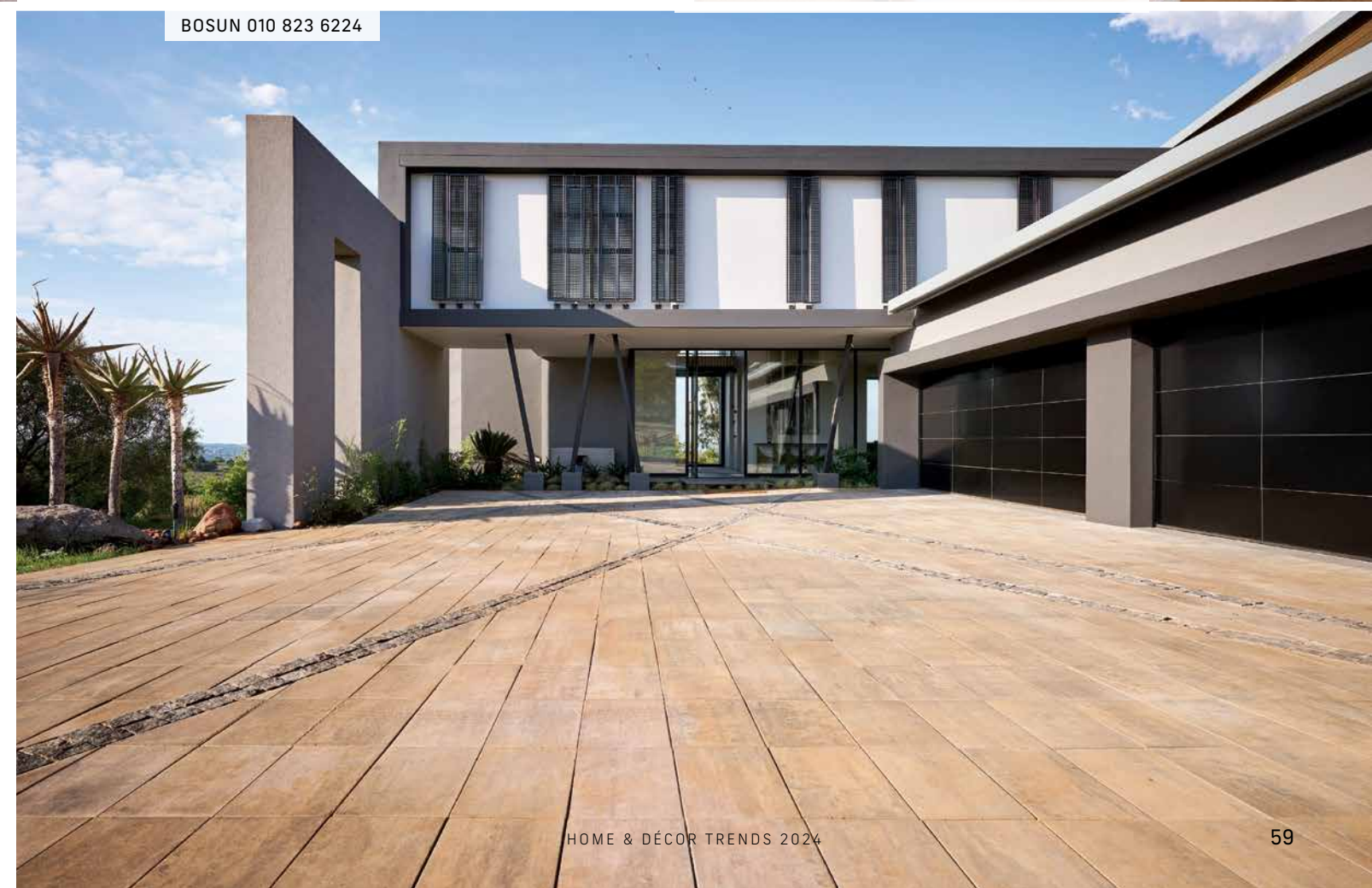
SARITA SHARMAN LIGHTING & DÉCOR 011 794 1207



**ABOVE: HUS living space** designed, manufactured and installed the cabinetry throughout this home, including the kitchen, wine cellar/bar, bedroom, bathroom and study. Various materials were used in the kitchen, including white oak veneer monocoat, bronze-tinted mirror doors with bronze-tinted frames, as well as glass doors with bronze-tinted frames and LED lights. For the kitchen bench, matt grey and dark finishes were selected for a striking aesthetic, while Infinity Surfaces' Pietra Grey Satin worktops and drawers were chosen for visual appeal, functionality, and durability.

"This marvel of a home offers awe-inspiring architecture and interiors that are in vogue."

The architecture is indeed a feat and on par with the exceptional interior design and styling of the home. In each room, there is something that catches the eye and is on point with the current trends, including the colour palette, the fabric selection, the furniture and the statement lighting. Metallics and matt materials also feature in various areas of the residence, creating a stunning aesthetic and ensuring a future-forward look. Art pieces have been carefully curated to enhance the visual appeal, and creative wallcoverings, wall panelling and cladding take the textural element of the home to the next level. There are also plenty of curves throughout in the occasional chairs, the couch, coffee tables and side tables. >



BOSUN 010 823 6224





INFINITY SURFACES 011 822 1350



“Metallics and matt materials also feature in various areas of the residence, creating a stunning aesthetic and ensuring a future-forward look.”

**LEFT: Infinity Surfaces** provides the perfect frame for your kitchen, thanks to its innovative material, design uniformity and versatility. This kitchen island, backsplashes and drawer fronts work together seamlessly thanks to Pietra Grey by **Infinity Surfaces**. The large slabs ensure you cook and enjoy your meals within the best hygiene standards.



MASTERSTONE 083 340 6118



HOME & DÉCOR TRENDS 2024

**ABOVE:** Established in 2007, **Masterstone** specialises in the supply and installation of natural stones. To date, the company has been involved in various projects, including residential, golf estates, commercial developments, and private game reserves. Products include tiles, rivens and natural stone cladding that enhance the exterior of buildings while adding a timeless finish.

**BELOW: Eva-Last** designs and delivers beautiful, long-lasting, eco-friendly building materials and accessories, including composite decking, cladding, railings, architectural beams, fasteners and indoor flooring. The company supplied and installed the exterior composite cladding for this home using VistaClad Infinity advanced bamboo composite cladding in an Oasis Palm colour.



EVA-LAST 010 593 9220

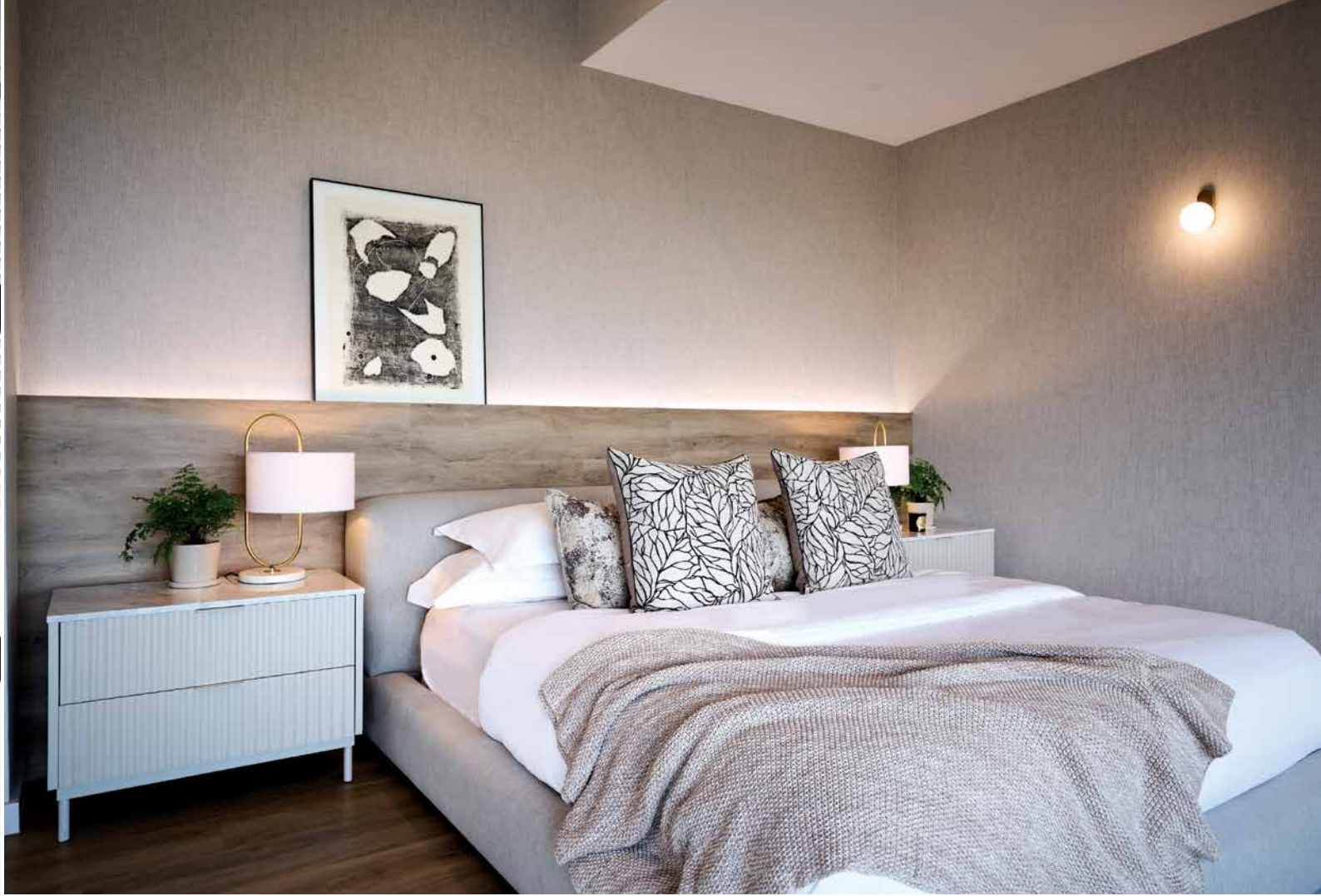


HOME & DÉCOR TRENDS 2024



**AZURA DISTRIBUTORS 010 599 5999 (JHB)**

These residents were looking for a modern luxury vinyl floor that would add splendour to the existing design elements in this home. They also required a flooring solution that would be easy to maintain, provide underfoot luxury and offer ease of use. They reached out to Trinity Décor Solutions to undertake the correct installation of the flooring solution and to create a seamless look and finish. **Azura Distributors**, a company specialising in the distribution of high-quality floor coverings, imported and supplied the deZign Floor – Series 200 – glue-down luxury vinyl in an Oatmeal Ash colour.



In keeping with the latest styles, curves are in and add to the organic appeal of a space and, in this home, they soften the areas where they can be found, while adding to the comfortable and welcoming ambience.

"It is a contemporary and modern property and our interior decorator was able to transform our ideas into a beautiful, elegant and inviting home," explains the owner.

Asked what her favourite space is in the residence, the owner states that it is difficult to choose. "All the rooms are distinct from each other. But the kitchen, overlooking the patio, infinity pool and reserve, is definitely one of my favourites. It brings that calmness – I also enjoy preparing meals for my family while cooking and looking out towards the beautiful north view of our home." 🏡







## CONTACTS:

**AZURA DISTRIBUTORS** – importers and distributors of floor coverings, 021 534 0870 (CT), 031 944 5999 (KZN), [www.azura.co.za](http://www.azura.co.za)

**BENTLEY SOUTH AFRICA** – luxury vehicle retailer, 010 020 4000, [jermaine.jardine@bentleysouthafrica.co.za](mailto:jermaine.jardine@bentleysouthafrica.co.za), [www.johannesburg.bentleymotors.com](http://www.johannesburg.bentleymotors.com)

**BOSUN** – paving manufacturer and supplier, 010 823 6224, [info@bosun.co.za](mailto:info@bosun.co.za), [www.bosun.co.za](http://www.bosun.co.za)

**CHALEUREUX** – statement luxury lighting, 071 306 2620, [info@chaleureux.co.za](mailto:info@chaleureux.co.za), [www.chaleureux.co.za](http://www.chaleureux.co.za)

**CURTAIN DROPS** – curtains, blinds, upholstery and soft furnishings, 083 601 4723, 083 604 0292, 083 601 6093

**DREAM LIVING CONSTRUCTION** – outdoor renovations, 083 452 2070, [jose@lcn.co.za](mailto:jose@lcn.co.za)

**EVA-LAST** – sustainable building products supplier, 010 593 9220, [sales@eva-last.com](mailto:sales@eva-last.com), [www.eva-last.co.za](http://www.eva-last.co.za)

**F-ARCHITECTURE** – architect, 083 286 8652, [phillip@f-architecture.co.za](mailto:phillip@f-architecture.co.za)

**HUS LIVING SPACE** – design, manufacture, installation of cabinetry and worktops, 082 326 6769, [sales@husliving.space](mailto:sales@husliving.space), [www.husliving.space](http://www.husliving.space)

**INFINITY SURFACES** – large-scale porcelain slabs, 011 822 1350, [infinitysurfaces.co.za](http://infinitysurfaces.co.za), IG: @InfinitySurfacesZA

**LABARINT INTERIORS** – interior design, interior finishes, space planning, 082 970 826, [marielouis@labarintinteriors.co.za](mailto:marielouis@labarintinteriors.co.za), IG: @labarint\_interiors

**LIFESTYLE LAB CONSTRUCTION AND DESIGN** – construction and design, 078 204 2617, 082 418 4639, [waldo.nagel@gmail.com](mailto:waldo.nagel@gmail.com)

**MASTERSTONE** – natural stone products, 083 340 6118, [info@masterstone.co.za](mailto:info@masterstone.co.za), [www.masterstone.co.za](http://www.masterstone.co.za)

**SARITA SHARMAN LIGHTING & DÉCOR** – lighting design and supply, [sales@sharman.co.za](mailto:sales@sharman.co.za), [accounts@sharman.co.za](mailto:accounts@sharman.co.za), [sarita@sharman.co.za](mailto:sarita@sharman.co.za)

**VICTORIA+ALBERT BATHS** – volcanic limestone baths and basins, [info@vandabaths.co.za](mailto:info@vandabaths.co.za), [www.vandabaths.com](http://www.vandabaths.com), IG: @houseofrohl.sa

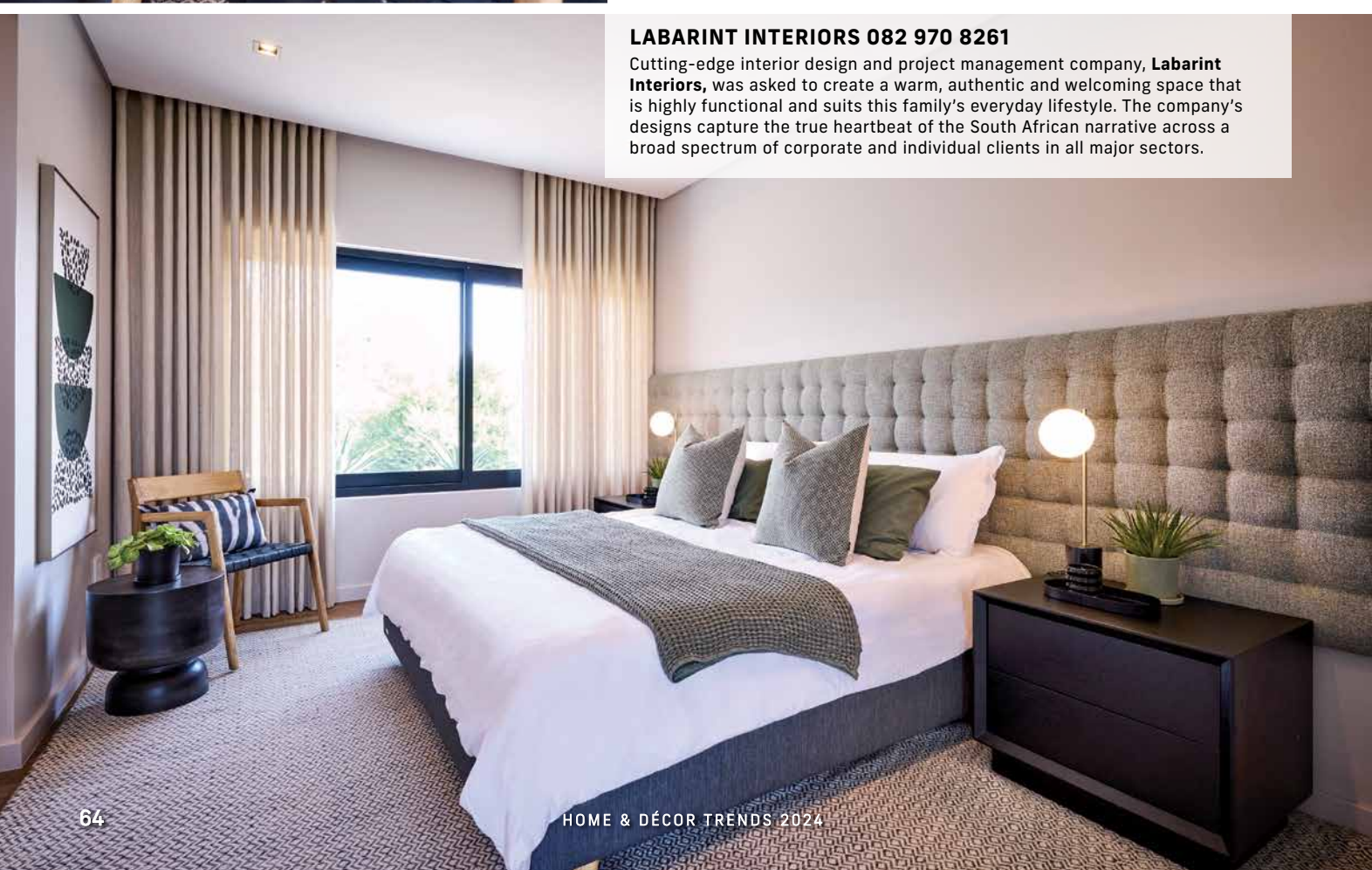


**RIGHT:** With nearly zero porosity, simple maintenance and a rich colour repertoire, **Infinity Surfaces** is the ideal surface. The vanity, backsplash and storage cupboards feature Milan Stone by **Infinity Surfaces** – providing tonal continuity and balance. Your bathroom, a place for personal care, will take on new importance with **Infinity Surfaces**.

**BELOW:** The Trivento bath, from **Victoria+Albert Baths**, reimagines the original French bateau bath as a contemporary sculpture, but with such subtlety and simplicity that it becomes a work of modern art. Made from standard white Quarrycast, the bath features a fine rim and a deep double-ended bathing well, complementing this open-space bathroom beautifully.

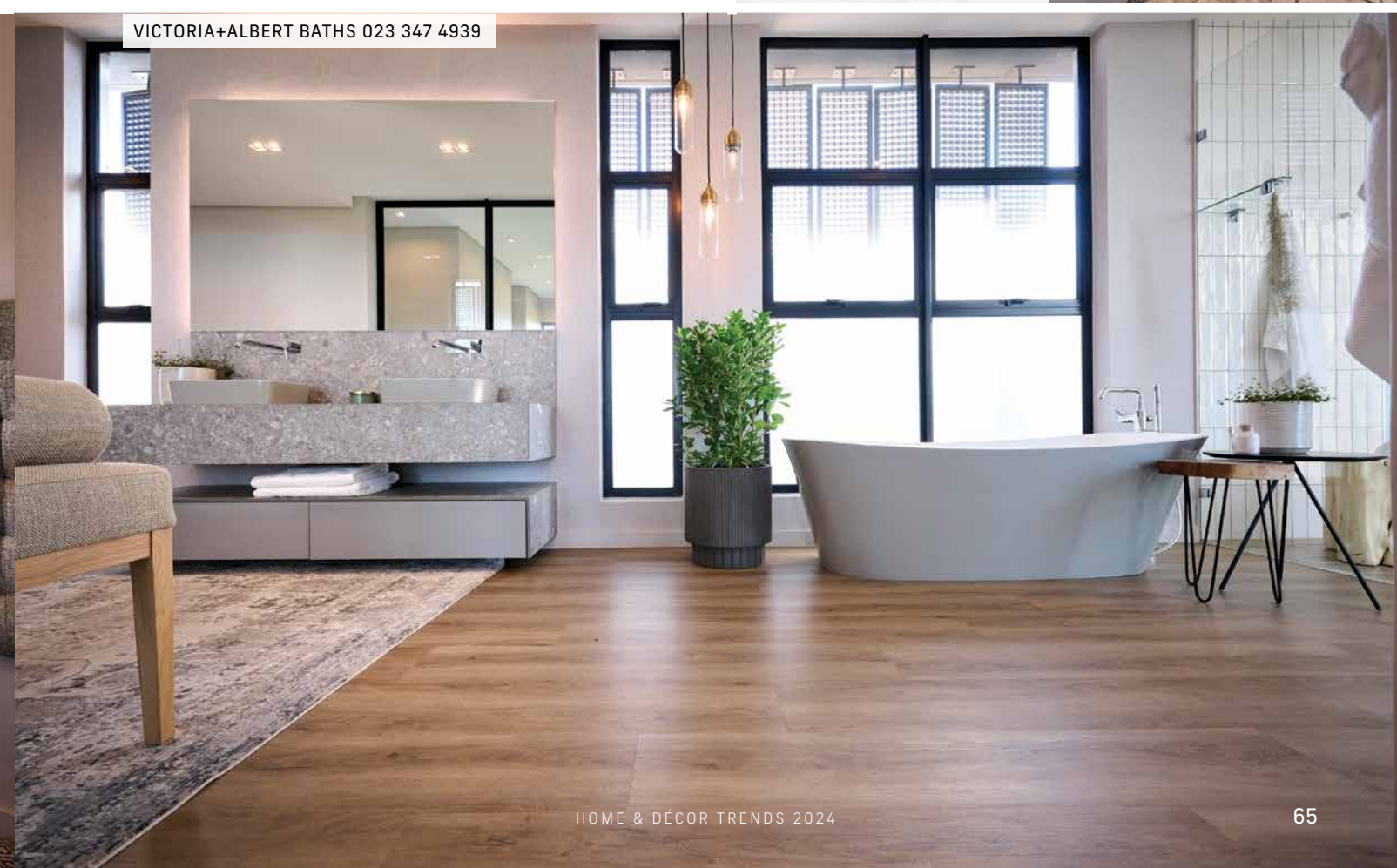


INFINITY SURFACES 011 822 1350



## LABARINT INTERIORS 082 970 8261

Cutting-edge interior design and project management company, **Labarint Interiors**, was asked to create a warm, authentic and welcoming space that is highly functional and suits this family's everyday lifestyle. The company's designs capture the true heartbeat of the South African narrative across a broad spectrum of corporate and individual clients in all major sectors.



VICTORIA+ALBERT BATHS 023 347 4939