

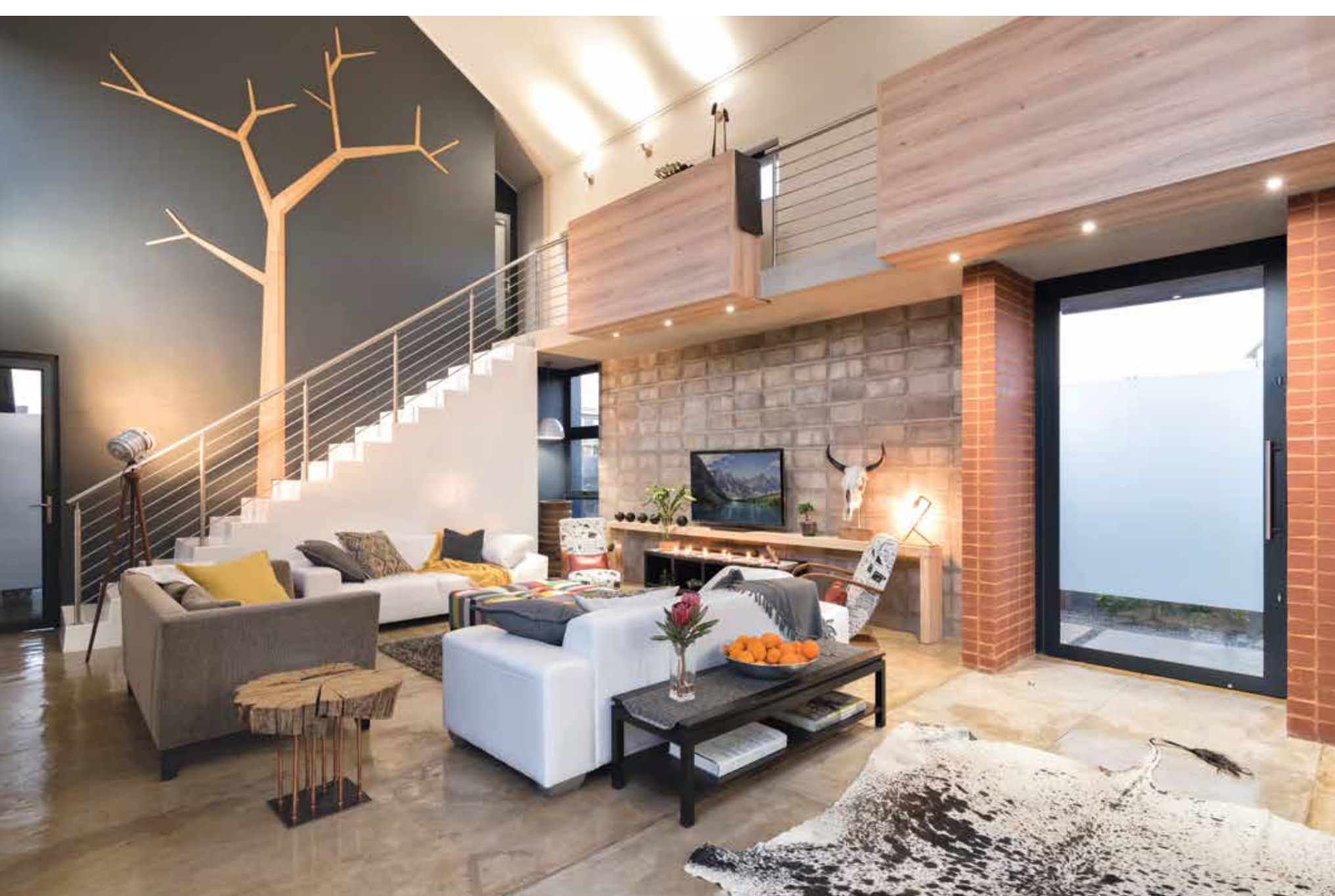
**BASICS AND BEYOND 082 659 8055**

Basics and Beyond is a supplier of furniture and homeware products. The company offers clients a range characterised by good value and fresh design, with products ranging from office chairs to bar stools, tables, desks, couches, outdoor furniture and homeware. The company's PM01 chair is an ideal piece for this home, suited to the new generation of urban styling. Visit the company's website to view other exciting products. Quote voucher #SAHOME for 10% off online purchases.

# A SENSE OF PLACE

BY LISA WITEPSKI  
PROJECT CONSULTANT LORNA IOAKIM  
PHOTOGRAPHER BRONWYN ALYSON





ENZO LOGISTICS 083 778 6582

**ABOVE:** As a partner from the initial conceptual phase through to final design and construction of the home, Enzo Logistics, a provider of tailored turnkey roofing solutions, set out to offer top-quality, precision products and hands-on, customised, personal service. Products include roof trusses, sheeting and side cladding.

The home itself takes its cues, firstly, from the specific architectural language that once dominated the Pretoria horizon, before it became a key urban centre. The owner says he drew inspiration from the expressive, unembellished and purely functional elements of agricultural buildings, transforming them into a contemporary residential dwelling. "The outcome is a north-facing, open-plan courtyard dwelling with simple and functional forms, and an expressive, sculptural structure that references an agricultural shed," the owner says.

He further sought to integrate the agricultural topography of the region with the building materials typical of Ndebele culture, and the natural flora growing in the Pretoria Highveld area. This aesthetic was achieved through the use of stack-bonded red clay bricks, while landscaping in the front garden makes use of veld grass and aloes reminiscent of the Pretoria Highveld.

The farm-style exterior is complemented internally by a natural palette of soft, earthy tones, accented with pops of colour in strategic areas. The owner notes that a charcoal accent was chosen as the dominant colour on strategic walls, to marry the various design elements and textures within the home. This creates coherence between walls constructed with stack-bonded cement building blocks and the off-shutter concrete that dominates the ground-floor ceiling. >

**T**he fact that the owner is also the architect and interior designer of this Pretoria house explains its very personal feel.

The 350m<sup>2</sup> four-bedroom, double-volume courtyard home comprises an open-plan lounge, dining area and kitchen, with a separate scullery leading to a double garage. A study is located on the first floor, and leads to an indigenous rooftop garden. The courtyard area invites outdoor entertaining with a patio, built-in braai and raised pool designed to recall a farm dam. This leads to a second, private courtyard planted with olive trees.

The owner, who designed the house and its interiors, explains that the home's aesthetic was influenced as much by his small-town childhood in Schweizer-Reneke as by the distinctive elements of its location. "My home town was characterised by a vast, open landscape. The farm-style way of life has had a clear impact on my designs," he says.

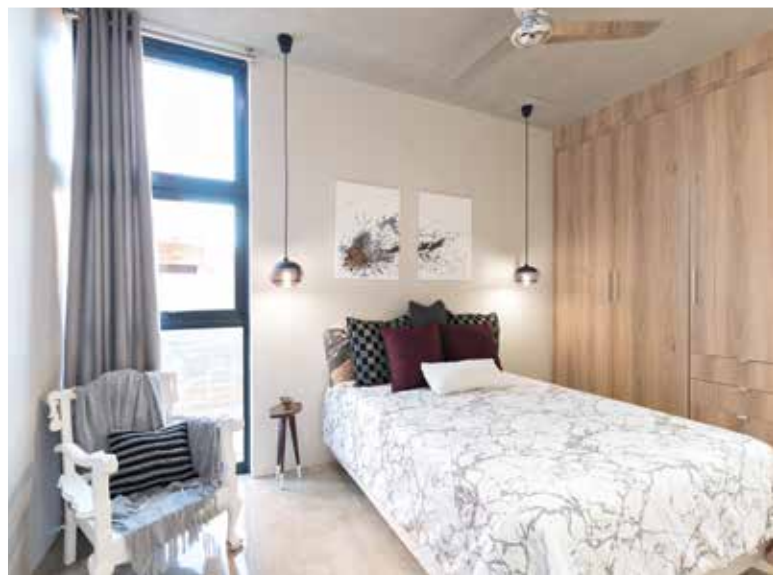






This embraces the honesty and rawness of the agricultural aesthetic, and enhances the home's sculptural nature, which is further reinforced through the use of a floor made of steel floated cement screed, with an acrythane coating.

The owner also curated the furnishings, selecting as the centrepiece of the interior an Ndebele-inspired ottoman, which he designed himself. This singular piece offers an explosion of colour, enlivening the open-plan living area. It also reintroduces the concept of the Ndebele design idiom which underlines the design of the house.



The inspiration for other furnishings developed in line with the construction of the home, so they speak to its very essence. All pieces, from side tables to light fittings, wall art, tables, chairs, decor and sculptures, were designed and made "sometimes from scratch; some were upcycled from old pieces, and some pieces were found directly from Mother Nature. My ouma was also put to work to knit scatter cushions and throws for the interior," he says.

The result is a home that speaks to the heart in many ways. 🏡

#### CONTACTS:

**BASICS AND BEYOND** – furniture and homeware  
082 659 8055, [sales@basicsandbeyond.co.za](mailto:sales@basicsandbeyond.co.za),  
[www.basicsandbeyond.co.za](http://www.basicsandbeyond.co.za)

**ENZO LOGISTICS** – tailored roofing  
083 778 6582, [johann@enzologistics.co.za](mailto:johann@enzologistics.co.za),  
[www.enzologistics.co.za](http://www.enzologistics.co.za)

